

Parents policy reignites security talk

Moms and dads got into dorms too easily, some students contend

By Patricia Z. Dominguez and
Alexandra Delmore
ASSOCIATE NEWS EDITORS

Dormitory security procedures during Parents Weekend have rekindled undergraduate resentment toward new security policies implemented at the beginning of the semester.

In a letter sent in October to

undergraduate residence halls, Dan Roderick, the director of housing operations, stated that Residential Life & Dining collaborated with the Parents Association and security staff members to develop a policy aimed at facilitating families' access to dorms.

"Starting at 8:00 am on Friday, October 24, 2014 and ending at 11:00 pm on Sunday, October 26,

2014, all families who have Parents Weekend name badges only need to present their name badge and a government-issued ID to the desk attendant for verification when entering any undergraduate residence hall. They will not need to be signed in," said Roderick in the letter.

For MIT students and affiliates, normal security policies applied

over Parents Weekend: those on a resident's guest list were required to tap their IDs to enter dorms; others had to be personally escorted past security by a resident.

Many students criticized the more lenient protocol for parents during Parents Weekend.

In an email thread sent out

Dorm security, Page 13



M. SCOTT BRAUER

Jonathan H. Gruber '87

Obama and Dems snub econ prof.

Firestorm envelops Obamacare advisor

By Sanjana Srivastava

STAFF REPORTER

MIT economics professor Jonathan H. Gruber '87, often referred to as a key Obamacare "architect," has come under fire recently for videos from 2012 and 2013 in which he calls American voters "stupid" and attributes the passage of the Affordable Care Act in part to "basic exploitation of the lack of economic understanding of the American voter," according to press reports from this past weekend.

Gruber was paid almost \$400,000 by the Obama administration for his work on the ACA. Sen. John Barrasso, R-Wyo., said that "he ought to just give the money back."

Gruber said on MSNBC last week that he regretted his "off the cuff" remarks. Lecture transcripts on OpenCourseWare show that he seems to call things "stupid" frequently.

Republicans have used his videos to argue that the Obama administration was not sufficiently transparent about the ACA before it passed. President Obama dismissed the criticisms on Sunday.

"I just heard about this," Obama said at a press conference. "The fact that some adviser who never worked on our staff expressed an opinion that I completely disagree with, in terms of the voters, is no reflection on the actual process that was run."

Democrats have been distancing themselves from Gruber, with House Minority Leader Nancy Pelosi claiming that she didn't know who he was despite citing him in 2009.

Prominent Democrats have disputed his claims that the ACA passed because voters were in the dark about the taxes associated with insuring more people. Former Obama campaign advisor David Axelrod took to Twitter to assert that the ACA was clear and that Gruber was the one being "stupid," and White House press secretary Josh Earnest said that every step of the ACA "has been extraordinarily transparent."

Fox News's Sean Hannity sent a camera crew to Building E25 on Monday to confront an umbrella-toting Gruber.

"Professor, do you really think the American voters are stupid?" a crew member asks. "What about the Obamacare? Is that just a hoax on the American people?" Hannity's footage then shows Gruber walking away without responding.

OBITUARY

Guichard-Ashbrook remembered

Associate dean made home away from home

By Bryan Marquard

THE BOSTON GLOBE

Work and marriage brought Danielle Guichard-Ashbrook to India, Japan, and Hong Kong, where she studied, taught, and assisted refugees. That was ample preparation to direct MIT's International Students Office, but her emotional resume was just as pronounced. To sense the struggle of adapting to a distant new home, she needed only to look inside her heart.

Her mother was from the small German town of Niederlahnstein, and her father, a Parisian, was part of the French occupation forces after World War II. They moved to the United States when Ms. Guichard-Ashbrook was 2, settling in the Bloomington-Normal area of Illinois.

"She was of this country, but also not, because their home was deeply European and it gave her an insider-outsider perspective on life," said her husband, Tom Ashbrook, whose family settled in that part of Illinois in 1818. "She understood intimately what it was to live in this country, but not be entirely of it."

At the Massachusetts Institute of Technology, Ms. Guichard-Ashbrook "touched the lives of thousands of students. Everybody is heartbroken," said Maria Brennan, assistant director of the International Students Office. "She had a particular love for international students, and she was well aware of the difficulties of adjusting to a new culture."

As associate dean for international students, Ms. Guichard-Ashbrook worked until about six weeks before she died of breast cancer on Nov. 7 in her Newton home. She was 60 and "bore her illness with great dignity," Brennan said.

Diagnosed several years ago, Ms. Guichard-Ashbrook was private about an illness that "she hated so much," said her daughter, Lauren, who returned home from Yale University soon after fall classes began, to be with her mother. "Her hatred had nothing to do with fear of death. It was singularly because she loved life so much. And that to me was really inspiring. She just loved the life she was living and didn't

Guichard-Ashbrook, Page 12



ALEXANDER C. BOST—THE TECH

Two signs hang on the railings of the second and third floor balconies in Lobby 7 on Monday in reference to the Ferguson, Missouri shooting of Michael Brown on Aug. 9. A grand jury decision on whether or not to charge police officer Darren Wilson over the shooting is expected this month.

IN SHORT

Drop date is Wednesday, Nov. 19. Students wishing to drop subjects they have registered for, and students wishing to add a for-credit UROP, must do so by this date.

The next Red Cross Blood drive at MIT will take place Monday, Nov. 24 and Tuesday, Nov. 25 in La Sala de Puerto Rico (W20-202).

MIT Intramural Sports registration for IAP is open and will run through Sunday, Nov. 30; individuals and teams should visit IMLeagues.com to sign up or contact alysonb@mit.edu for more information.

Send news information and tips to news@tech.mit.edu.

THESIS TOPICS

Can you find a meaningful one?
FUN, p. 5

LEGALLY BLONDE

MTG presents a musical adaptation.
PHOTO, p. 9

KATWALK

Highlights from sorority's annual fashion show. **PHOTO, p. 8**



ELENA RUEHR'S NEW OPERA

Professor's opera premiere to be performed by Roomful of Teeth.
ARTS, p. 10

MIT WINS AT DANCE TOURNEY

Rookies do particularly well in competition.
SPORTS, p. 15

SECTIONS

World & Nation . . . 2
Opinion 4
Fun Pages 5
Campus Life 7
Arts 10
Sports 16

WEATHER WEATHER WEATHER WEATHER

WEATHER

Chilly weather after a soggy start to the week

By Casey Hilgenbrink
STAFF METEOROLOGIST

The sun stayed hidden all day yesterday as Cambridge was soaked by nearly continuous rain associated with a low pressure system tracking up the coast. As of 5:00 p.m. yesterday, Boston Logan Airport had already received 0.82 inches of rain, with even more rain occurring throughout the overnight hours as the low pressure moved out of Southern New England.

Today, we have traded the rain for relatively cold and breezy weather. West winds at 15-20 mph (with gusts as high as 35 mph) will make for a cool

high temperature of about 37°F (3°C), or 7°F (4°C) below average. Expect much of the same for tomorrow: clear skies, gusty winds, and temperatures topping out in the mid 30s°F (2°C). There is a small chance of flurries Wednesday night associated with the next approaching cold front. Otherwise, the end of the week should be dry with temperatures in the upper 30s°F (3°C) to low 40s°F (6°C).

For those of us who are already tired of cold weather, good news! The National Weather Service's Climate Prediction Center has issued a 70% chance of above-average temperatures for Cambridge early next week.

Extended Forecast

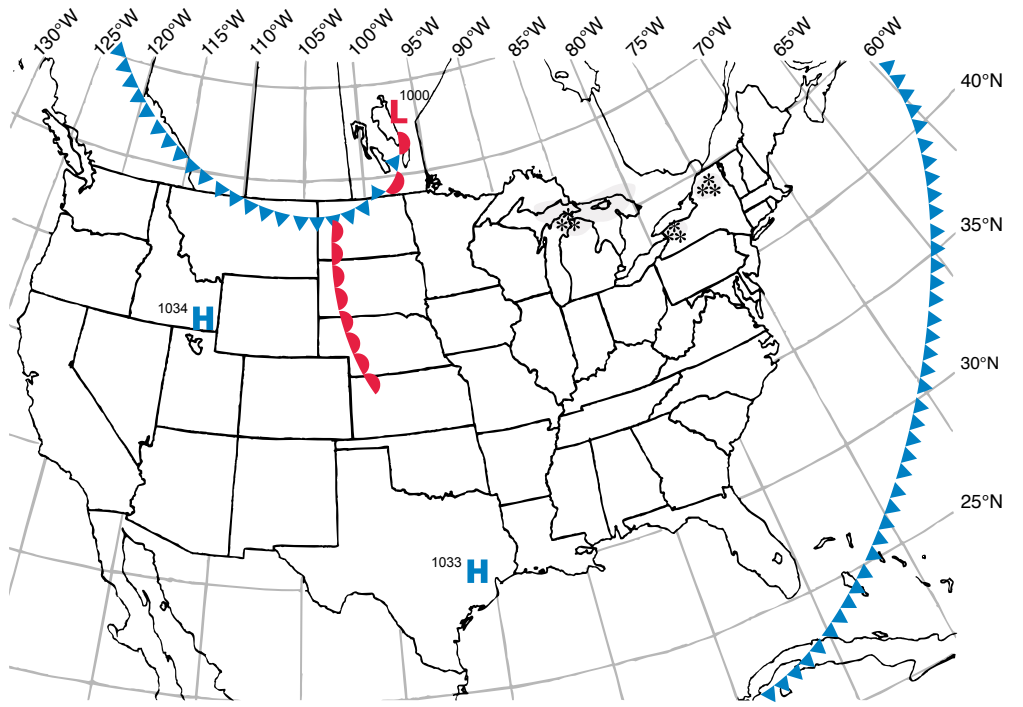
Today: Mostly sunny, with a high of 37°F (3°C). West wind at 15-20 mph, with gusts as high as 35 mph.

Tonight: Cold and clear, with a low of 22°F (-6°C). West wind at 15-20 mph, with gusts as high as 30 mph.

Tomorrow: Sunny, with a high of around 35°F (2°C). West wind at 10-15 mph.

Thursday: Partly cloudy, with a high in the low to mid 40s°F (6°C).

Friday: Mostly sunny, with a high in the upper 30s°F (3°C).



Situation for Noon Eastern Time, Tuesday, November 18, 2014

Weather Systems	Weather Fronts	Precipitation Symbols		Other Symbols
		Snow	Rain	
H High Pressure	- - - Trough	* (Snow)	• (Rain)	☁ Fog
L Low Pressure	⬤⬤⬤ Warm Front	▽ (Showers)	• (Rain)	⚡ Thunderstorm
§ Hurricane	▲▲▲ Cold Front	* (Light)	• (Moderate)	☁ Haze
	▲▲▲ Stationary Front	** (Moderate)	•• (Heavy)	☁ Haze
		*** (Heavy)	••• (Heavy)	☁ Haze

Compiled by MIT Meteorology Staff and The Tech

WE TAKE THE THRILL OUT OF INVESTING.

At TIAA-CREF, we believe the less excitement you find in your portfolio the better. When we invest, we do it for the long term, steadily.¹ Our approach works so well it earned us the Best Overall Large Fund Company award two years in a row by the independent research firm Lipper.²

Learn more in one click at TIAA.org or call 855 200-7243.



Financial Services

Outcomes That Matter



LIPPER
FUND AWARDS 2013
UNITED STATES



LIPPER
FUND AWARDS 2014
UNITED STATES

BEST OVERALL LARGE FUND COMPANY²

The Lipper Awards are based on a review of 36 companies' 2012 and 48 companies' 2013 risk-adjusted performance.

Consider investment objectives, risks, charges and expenses carefully before investing. Go to tiaa-cref.org for product and fund prospectuses that contain this and other information. Read carefully before investing. ¹TIAA-CREF funds are subject to market and other risk factors. Past performance does not guarantee future results.

²The Lipper Award is given to the group with the lowest average decile ranking of three years' Consistent Return for eligible funds over the three-year period ended 11/30/12 and 11/30/13, respectively. TIAA-CREF was ranked against 36 fund companies in 2012 and 48 fund companies in 2013 with at least five equity, five bond, or three mixed-asset portfolios. TIAA-CREF Individual & Institutional Services, LLC, and Teachers Personal Investors Services Inc. C18456B ©2014 Teachers Insurance and Annuity Association of America – College Retirement Equities Fund (TIAA-CREF), 730 Third Avenue, New York, NY, 10017.

There is only one startup in the world backed by the largest software company in the world and the most powerful bank in the world.

KENSHO

Curious?

jobs@kensho.com

Sudoku

Solution, page 13

		9				1		4
8			7		4	9	6	
						2	8	
		5	4					7
7			5		6			9
9					7	5		
	8	2						
	5	7	3		2			8
1		4				3		

Instructions: Fill in the grid so that each column, row, and 3 by 3 grid contains exactly one of each of the digits 1 through 9.

Techdoku

Solution, page 13

12x		60x		2+	
	30x		6x	12+	
6		6x		12x	
1-			5x		2
12x		12x			6
	1		120x		

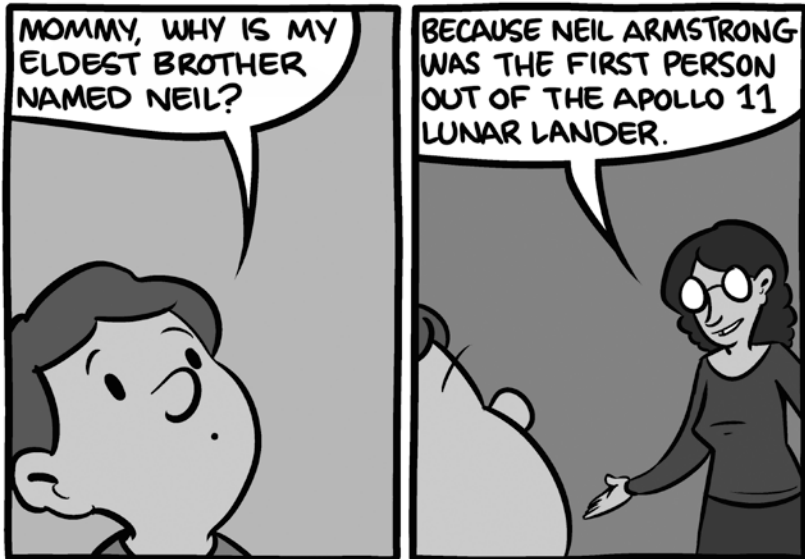
Instructions: Fill in the grid so that each column and row contains exactly one of each of the numbers 1-6. Follow the mathematical operations for each box.



S M B C
SATURDAY MORNING BREAKFAST CEREAL

BY ZACH WEINER

[3538]



Smbc-comics.com

PAGE @@

Out Like a Light

Solution, page 13

ACROSS

- 1 Storage level of a house
- 6 At a distance
- 10 Wine region in Italy
- 14 First Lady before Michelle
- 15 ___ in the woods (innocent one)
- 16 What a prune once was
- 17 One playing a part
- 18 Feels poorly
- 19 Undiluted
- 20 Out like a light
- 23 Exec's deg., often
- 24 Before, in poems
- 25 Portuguese capital
- 27 Ten-year span
- 31 Cross out
- 33 Tax shelters, for short
- 34 Infamous Roman emperor
- 36 More achy
- 39 Winery tubs
- 40 Modify, as legislation
- 42 Bread with a pocket
- 43 Fancy scarf
- 45 "This ___ sudden!"
- 46 Biting fly
- 47 Raises, as a sail
- 49 Yahoo! rival
- 51 Spring toy
- 53 Med. care group
- 54 Triumphed
- 55 Out like a light
- 62 Heart charts: Abbr.
- 64 Wedding-cake layer
- 65 Spot for a barbecue
- 66 Befuddle
- 67 Typical Iraqi
- 68 In the company of
- 69 Otherwise
- 70 Baby boomers' kids
- 71 Fogs

DOWN

- 1 "That's a shame"
- 2 Fried-and-filled tortilla
- 3 Ballerina's skirt
- 4 Barbell metal
- 5 Checked the ID of
- 6 Make humble
- 7 Come up short
- 8 Up to the job
- 9 Offer used goods
- 10 Tablet-computer download
- 11 Out like a light
- 12 Engine booster
- 13 "In other words . . ."
- 21 Sports stadium
- 22 Fruit-filled desserts
- 26 Slow, as rush-hour traffic
- 27 Prima donna
- 28 Historical periods
- 29 Out like a light
- 30 Part of ASAP
- 31 Gown, for example
- 32 Countless ages
- 35 Radiate, as light
- 37 List-ending abbr.
- 38 Evaluate
- 41 Religious doctrine
- 44 Polynesian carving
- 48 Sentence structure
- 50 Tuba sound
- 51 Stockholm native
- 52 From around here
- 53 Parsley and sage
- 56 Very urgent
- 57 Bring up, as kids
- 58 Tibetan priest
- 59 From ___ (completely)
- 60 Prime-time hour
- 61 Poodles and pointers
- 63 Observe

1	2	3	4	5		6	7	8	9		10	11	12	13	
14						15					16				
17						18					19				
20						21				22		23			
						24				25		26			
27	28	29	30				31	32							
33						34	35			36			37	38	
39						40				41		42			
43					44		45					46			
					47		48			49	50				
51	52								53						
54					55		56	57				58	59	60	61
62					63		64				65				
66							67				68				
69							70				71				

Institute Double Take



By Megan Prakash
STAFF PHOTOGRAPHER

I saw a post on reddit.com/r/mit asking when “MITHenge” would be this year. I clicked the link in the post and discovered that the alignment of the setting sun with the Infinite Corridor has been measured and modeled for decades. Turns out, the predicted dates for this winter’s perfect alignment — when the setting sun would be visible from

the very end of the Infinite, in Building 8 — were November 10-12. So, of course, I set a reminder in my calendar and grabbed a camera when the first predicted time arrived.

The sunlight splashed through the windows, as expected, and threw some gorgeous oranges and yellows across the marble of Lobby 7. I squinted into the light, raised my camera to my face, and felt mildly guilty for being THAT person who stops in the middle of the Infinite.

Aperture:
f/4.5
Exposure Time:
1/80 sec.
Sensitivity:
ISO 1600
Effective Focal Length:
62 mm

CAMPUS LIFE CAMPUS LIFE CAN

DONATE SPERM
EARN UP TO
\$1,500/Month

BE A HERO

SPERMBANK.COM
APPLY ONLINE

WANTED
PART TIME REPRESENTATIVE
FOR THE GRADRAT
Evening grad student
events, occasional weekend
events (Ashdown Brunch)
and some week days.
During semesters only.
Contact: Peg Mead
Peg.mead@balfour.com

Are you dying to tell someone
your latest epiphany?

Write about it!

Join Campus Life @ The Tech!

E-mail join@tech.mit.edu

**INTERESTED IN
FULL TUITION & A JOB**

SMART
SCIENCE, MATHEMATICS
& RESEARCH FOR
TRANSFORMATION
PART OF THE NATIONAL DEFENSE
EDUCATION PROGRAM

IN YOUR
STEM FIELD

AFTER

**YOU
GRADUATE?**

YEARLY CASH STIPEND?

HEALTH INSURANCE?

BOOK ALLOWANCES?

PAID SUMMER INTERNSHIPS?

APPLY NOW AT SMART.ASEE.ORG!



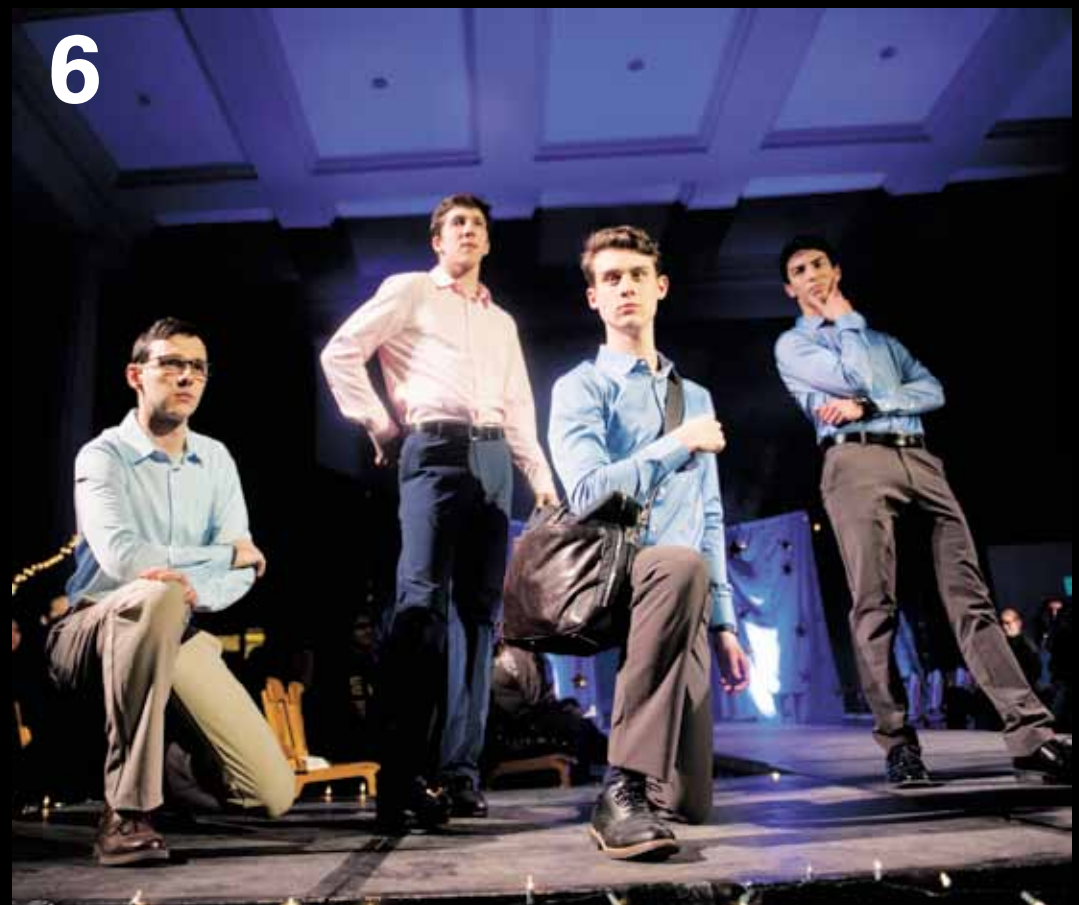
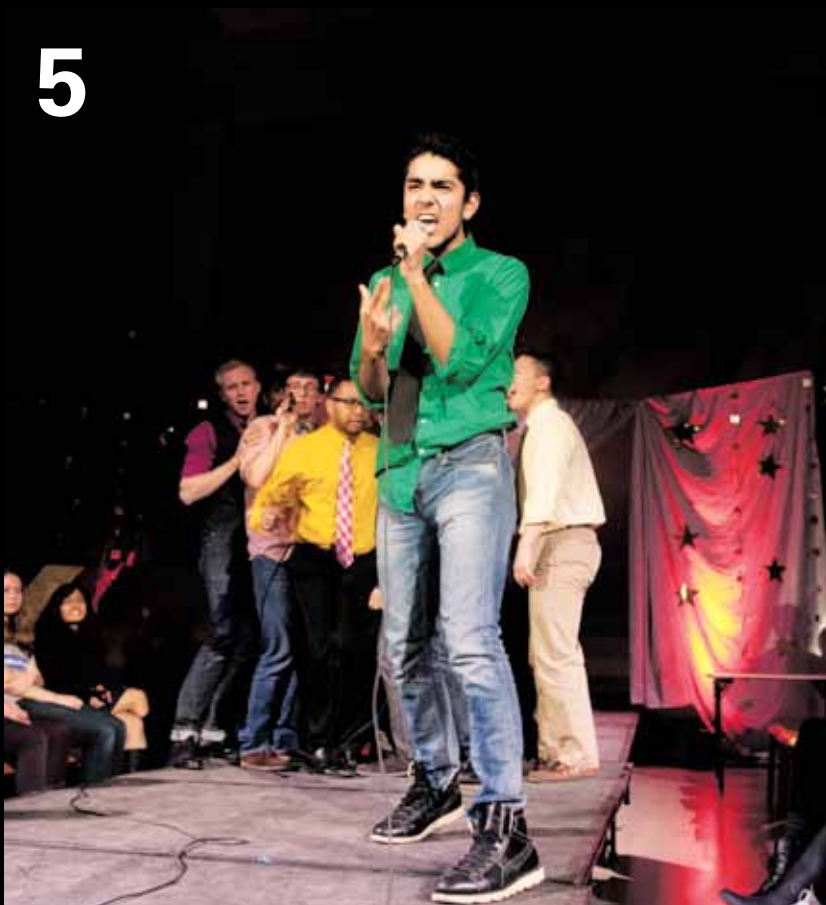
KATWALK

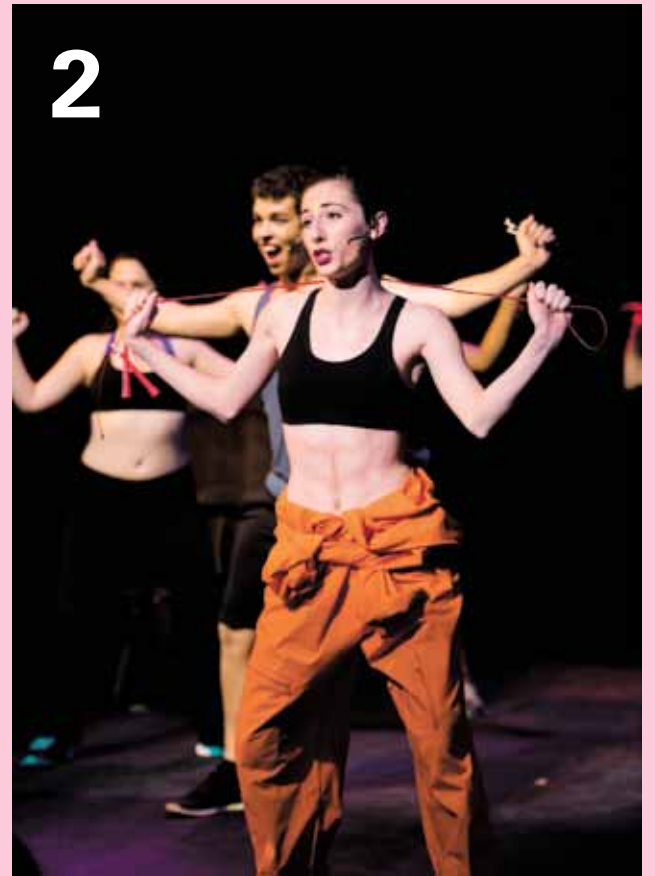
Photography by Alexander C. Bost



MIT students take to the runway on Friday, Nov. 14 in Walker for the annual KATwalk, a benefit fashion show organized by the sisters of Kappa Alpha Theta, featuring outfits from boutiques and stores on Newbury Street, the Prudential, and Harvard Square.

1. Wei-En Lee '16, Daniel R. Chen '17, and Charles A. Bachmeier '18 model sportswear from Janil.
2. Laura E. Kelley '16 models clothing from the Habit line.
3. Ayomide M. Fatunde '18 showcases an outfit from the Trashion line.
4. Scout F. Brisson '17 blows a kiss to the audience.
5. Jaaron B. Botello '15 performs with the Logarhythms.
6. Arthur J. Delarue '16, Abraham S. Gertler '18, Emanuele Ceccarelli '17, and Leopoldo Calderas '17 pose while modeling outfits from the Ministry of Supply.





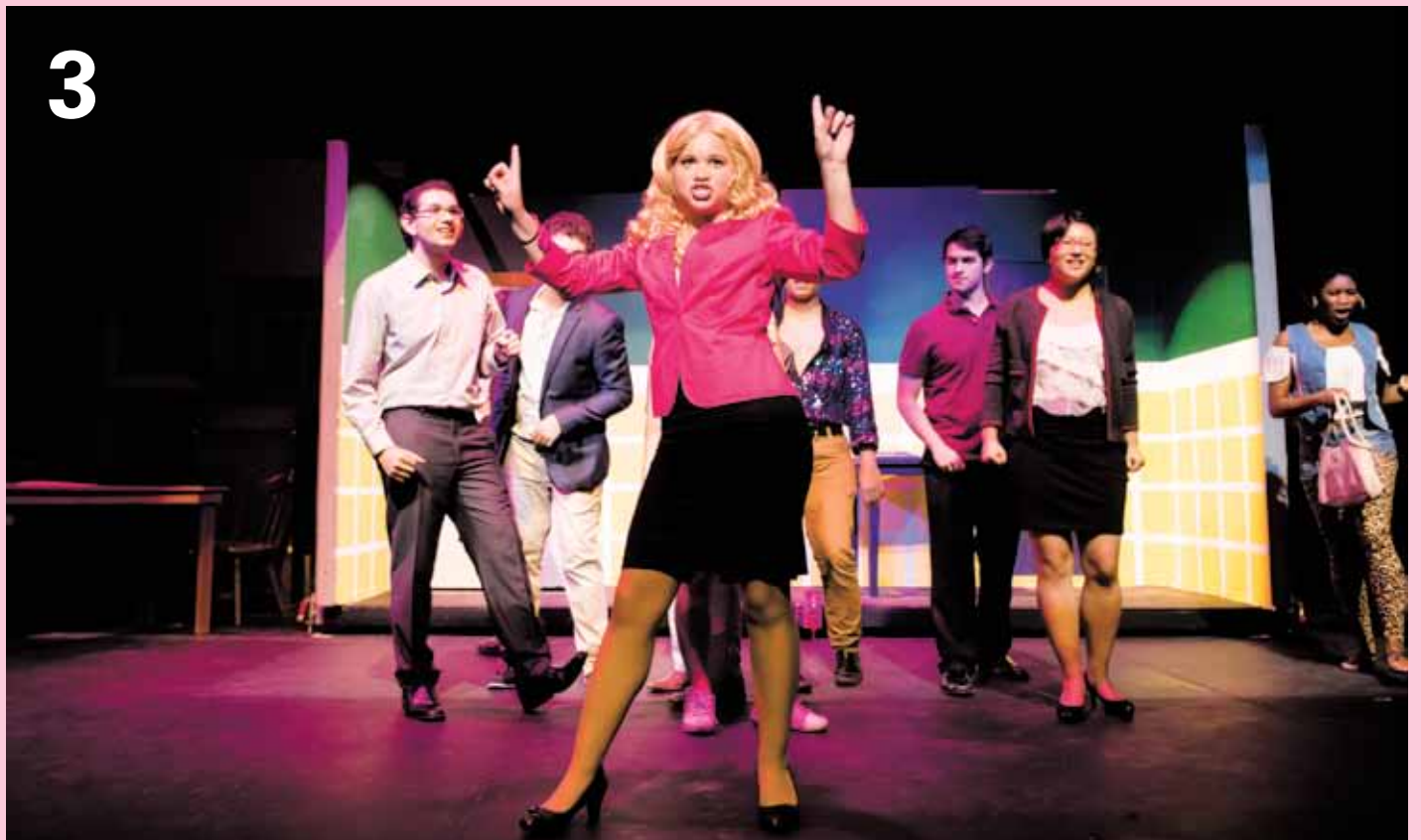
MIT Musical Theatre Guild presents

Legally Blonde

Photography by Landon Carter

MIT students rehearse for Musical Theatre Guild's rendition of *Legally Blonde*, which will be showing in La Sala De Puerto Rico Nov. 14–15 & 20–22 at 8 p.m. and Nov. 16 at 2 p.m.

1. Elle Woods' Greek Chorus performs in Act One of MTG's *Legally Blonde*.
2. Noelle A. Colant '17 performs "Whipped Into Shape" as fitness queen Brooke Wyndham at the start of Act Two of MTG's *Legally Blonde*.
3. Mackenzie E. Devoe '15 performs as Elle Woods, star of MTG's *Legally Blonde*.
4. The students celebrate their graduation from Harvard Law School in the finale of MTG's *Legally Blonde*.
5. Chamille J. Lescott '16 and Miles C. Kelsey '15 perform an Irish Dance as Paulette Bonafonte and Kyle in MTG's *Legally Blonde*.



CAMPUS ARTS

Elena Ruehr's "Cassandra in the Temples"

Roomful of Teeth will premiere Ruehr's new work at MIT

By Denis Bozic
ARTS EDITOR

Elena Ruehr, who has been a lecturer at MIT in the Department of Music and Theater Arts since 1992, is premiering three new works this fall. Two of those, "Eve" and "It's About Time," had their openings in Boston and San Francisco this month, while the third one, an opera titled "Cassandra in the Temples," will have its opening night in Kresge Auditorium at MIT this Friday.

Ruehr's work is known for its complex structure, organic music, and diverse collaborations that give her compositions a fresh, dynamic flavor. For the upcoming opera that will premiere at MIT, Ruehr is working with librettist Gretchen Henderson and Grammy Award-winning vocal octet Roomful of Teeth. *The Tech* talked to Ruehr about this exciting collaboration, inspirations that led her to the creation of this piece, and her artistic beginnings.

"I have many important musical influences," said Ruehr. "My first love as a child was ballet, and I learned a great deal of ballet music. I also played the piano, taking lessons from my mother who had a background in folk music. She taught me how to write down the music I improvised from a very early age, and also taught me many folk songs. I listened to jazz that my dad played, rock music that my brothers liked, and I studied jazz in high school, with Eddie Russ, as well as composition and piano with a fantastic composer named Melvin Kangas."

Ruehr's father also had an important influence on her choice of career as his musical preferences became a part of Ruehr's creative core early in her life. Later on, Ruehr got interested in two divergent musical ideas, twelve-tone music and minimalism, whose characteristics still have an impact on Ruehr's music.

This year, Ruehr received the Guggen-



CHRISTIAN STEINER

Elena Ruehr's opera "Cassandra in the Temples" premieres this Friday in Kresge Auditorium.

heim fellowship, which allowed her to take a semester off from teaching and focus on premiering her new works. The three pieces have been written during the last two years, and even though it's only a coincidence that they are all premiering at the same time, Ruehr admits that the timing for rehearsals and concerts is keeping her busy. "It's About Time" premiered this Sunday in San Francisco, and just as Ruehr got home, Roomful of Teeth arrived at MIT to premiere "Cassandra in the Temples."

"The idea for ['Cassandra in the Temples'] was a true collaboration with the librettist, Gretchen Henderson," said Ruehr about the upcoming opera. "Gretchen, who was an MIT Melon Post doctorate, asked me a year and a half ago if I'd like to collaborate with her on a piece with text. I loved her work, which is smart, well-informed, and extremely innovative, and we started brainstorming ideas. We decided that we'd like to write an a cappella opera, and that Cassandra was an interesting subject because of

how her story, with its implications of truth and lies, hyperbole and distrust, was very contemporary. While we were discussing this, Roomful of Teeth released a CD of their music, and we both fell in love with their beautiful and inventive sound. We wrote a single section from our imagined opera together and sent it to Brad Wells, who directs Roomful of Teeth, asking him if he would be interested in a new opera. He said yes, and a year and a half later, here we are!"

Having an innovative vocal ensemble like Roomful of Teeth premiere this opera is of great importance to Ruehr and Henderson. "We selected Roomful of Teeth because they are extraordinary," added Ruehr. "The octet will move back and forth between their many styles of music, from a kind of early music sound, to a more straight, contemporary music sound, to more extended techniques like throat singing and singing influenced by Bulgarian Women's Choirs."

When asked about the influence of MIT on her work, Ruehr said her students left a significant impact on her artistry. "I'm extremely influenced by my students, in such myriad ways that it's hard to pin down. Their curiosity and the questions they ask are always making me think about what makes music work, what makes it interesting, what makes it beautiful. In addition, I teach composing in the style of composers like Bach, Mozart and Beethoven, and studying that music, taking it apart, and teaching how to recreate within the general style is a complex thing. After decades of working with students on projects and studying the great masters, I find myself more and more interested in incorporating a sense of the history of music into my own work, while still keeping it contemporary and relevant."

After "Cassandra in the Temples," Ruehr still has a few important events ahead of her. In January, her new chamber music CD *Lift* will get released, her second violin sonata with Irina Muresanu and Sarah Bob will have its performance on January 29, and her orchestra piece "Shimmer" will be played on February 21 by the Alabama Symphony Orchestra. Ruehr described the February concert as "especially close to my heart because the conductor, Alan Pierson, is my former student and has become a good friend."

"Cassandra in the Temples" premieres this Friday in Kresge Auditorium at 8 p.m. Information about the tickets can be found here: <http://www.eventbrite.com/event/roomful-of-teeth-tickets-12838972713>.



COURTESY OF ROOMFUL OF TEETH

The Grammy Award-winning vocal octet, Roomful of Teeth, was chosen to premiere Elena Ruehr's new opera.

File Edit Options Buffers Tools Im-Python Python Help

```
from new_skills import *

def learnMarketableJobSkills():
    return linux, OSX, javascript, applescript, perl, python, PHP

if self.interest == True:
    print "E-mail join@tech.mit.edu"
```

----:----F1 joinTechno.py (Python)--L1--Top-----

#OccupyWallStreet

jobs@kensho.com

KENSHO

Fall 2014 Wulff Lecture

Department of Materials Science and Engineering

Tuesday, November 18, 2014

4:00–5:00 pm

Room 10-250

Reception immediately following

Hey, Atoms: What Have You Done For Me Lately?

The age of materials design and how it will change the energy world

Professor Jeffrey C. Grossman

Professor of Materials Science and Engineering

Department of Materials Science and Engineering

Understanding, inventing, and engineering mechanisms and materials for production, storage, and transport of energy are among the greatest challenges of the 21st century. Materials-driven advances are key to technologies that counter the deleterious environmental and political impacts of the world's long-standing reliance on fossil fuels. Current renewable energy conversion and storage technologies are either too expensive or too inefficient or both. Materials science and engineering is at the core of the energy challenge: many key mechanisms that convert and store energy are dominated by the intrinsic properties of the active materials involved. Our imperative is to predict, identify, and manufacture new materials as comprehensively and rapidly as possible to enable game-changing forward leaps rather than our current path of incremental advances. This lecture will discuss the impact of materials design on the energy world.

The Wulff Lecture is an introductory, general audience, entertaining lecture that aims to educate, inspire, and encourage MIT undergraduates to take up study of materials science and engineering and related fields. The entire MIT community, particularly freshmen, is invited to attend. The Wulff Lecture honors the late Professor John Wulff, a skilled, provocative, and entertaining teacher who conceived of a new approach to teaching general chemistry and inaugurated the popular freshman subject, 3.091 Introduction to Solid State Chemistry.

DMSE

Massachusetts
Institute of
Technology

International Students Office director dies at 60

Danielle Guichard-Ashbrook made those from afar feel welcome, helped navigate law

Guichard-Ashbrook, from Page 1
want it to end.”

Ms. Guichard-Ashbrook brought to her life an attention to detail that amplified every gesture and elevated each moment. It was as if she viewed the world through a prism that was at once pragmatic and poetic.

“She gave me an appreciation for how powerful it can be to make every minute of your life beautiful,” said her son Dylan, who lives in San Francisco.

“It’s hard to remind yourself that you have the power to do that, let alone to do it, and she did it all the time,” he said. “When you’re the child of someone who believes in the power and potential beauty of every moment, you can only imagine how she makes you feel about your own potential. The older I get, the more I appreciate how she made me feel.”

For Ms. Guichard-Ashbrook, every close relationship “was a gift to be indulged. She didn’t hold back when she loved something. She loved it in the biggest way possible,” said her other son, Ben of Los Angeles.

“She taught me how to love life. She taught me how to find the beauty in it, in a gentle, tender way. She didn’t tell me how, she showed

me how,” he said. “The love she had was so powerful that it’s bigger than time, bigger than death. And because she gave me that, I feel I can still have her present in my life. She’s living through me; she’s with me. It’s the greatest gift I could ever have received.”

‘She would just go out of her way to find ways of making them feel welcome.’

— **Steven Lerman**

FORMER MIT VICE CHANCELLOR

Danielle Guichard was the oldest of four daughters — “they were the town beauties,” her husband recalled. Her father, Robert Guichard, was an engineer at General Electric. Her mother, the former Barbara Lauer, taught elementary school.

In high school she began dating Tom Ashbrook, who now hosts the WBUR-FM talk show “On Point,” and whose extended family has farmed land in McLean County for seven generations. “I was 16, she was 17. We just fell deeply in love very, very early on and stayed there for 42 years,” he said. “In my love with her, I was marvelously lucky.”

In the Guichard home, “the big song was always ‘La Vie en Rose,

which became our song,” he said. “As a Midwestern farm boy, I just found that deep enveloping sense of romance intoxicating.”

He went to Yale, she graduated from the University of Illinois at Urbana-Champaign, and while still undergraduates they left for India, where they married the first of three times. It was 1975 and their community looked askance at an unmarried couple living together, so they wed. “We were too young for our parents to accept it so we didn’t mention it back home,” he said.

Two years later, he was a journalist based in Hong Kong and she was a program supervisor for the office of the United Nations High Commissioner for Refugees, assisting those fleeing Vietnam. Again neighbors preferred they marry locally, so they did once more. In 1979, “we were married for the third and final time on my family’s farm,” he said. “It was many years before our families knew that was our third.”

They moved to Boston, where Ms. Guichard-Ashbrook graduated with a master’s from the Harvard Graduate School of Education. Her husband wrote for the Globe, which sent him to Japan, where she became an academic coordinator for an educational company.

Returning to the Boston area, their lasting home, he became

a deputy managing editor at the Globe, and later joined WBUR-FM. She started at MIT, working her way up through jobs in which she helped guide and supervise international students. In 2001, she was named director and associate dean for international students.

“She cared so deeply about the students,” said Steven Lerman, a former vice chancellor at MIT who is now provost at George Washington University. “She would just go out of her way to find ways of making them welcome.”

Directing the International Students Office at MIT, Ms. Guichard-Ashbrook became versed in visa law, all the more so since the Sept. 11, 2001, terrorist attacks. She intervened when potential students encountered difficulties, personally welcomed them when they arrived at last, and threw receptions. At home and at work, she made each holiday and every celebration memorable.

“You should see what holidays in this house looked like — and birthdays and Halloween parties,” Dylan said. “They were all amazing because of her power of committing to the moment.”

In addition to her husband and children, Ms. Guichard-Ashbrook leaves a granddaughter; her parents, who live in Medford, Ore.; and

three sisters, Elisabeth Hiltabrand of Bloomington, Ill., Peg Watters of Phoenix, and Natalie Milby of Rockford, Ill.

A private service was planned for last Saturday.

Brenda Cotter and RuthAnn Sherman, a couple who were friends and neighbors of Ms. Guichard-Ashbrook in Newton, befriended her when their children attended school together.

From parties for children to gatherings for parents to costumes she wore, “the thing that most strikes me about Danielle is that she never did things by half-measures,” Cotter said.

“One thing will stay with me for the rest of my life,” she added. “Just a couple of weeks ago Danielle was very ill and really without a whole lot of energy. And kind out of the clear blue sky, she started singing ‘Love Is a Rose,’ and she had a very beautiful singing voice. It was so striking.”

Moments when Ms. Guichard-Ashbrook slipped from the literal into the lyrical were not uncommon. When her daughter was young, sometimes she would awaken to sounds of a melody. “I could hear music,” Lauren recalled, “and if I crept downstairs, I could catch her dancing in the living room, just by herself.”

ARTS MIT SOUNDING AT MIT

Presented by
MIT Center for Art,
Science & Technology
Music and Theater Arts

Funded in part by
The Council for the Arts at MIT

WORLD PREMIERES
PERFORMED BY
ROOMFUL OF TEETH

CASSANDRA IN
THE TEMPLES
A ONE-ACT OPERA

Composed by Elena Ruehr
Based on libretto by
Gretchen E. Henderson

BORDERLANDS: A
CANTATA FOR
UKRAINE

By Christine Southworth
and Evan Ziporyn

AND WORKS BY
GREENSTEIN,
SHAW AND
WELLS



FRIDAY, NOVEMBER 21, 2014 AT 8:00 PM / Kresge Auditorium
arts.mit.edu/roomful-of-teeth

Are you a font fiend? Do you like making presentations SHINE?

E-mail join@tech.mit.edu

We’re looking for people to help us design infographics to highlight writers’ content!

The Production Department of The Tech might be just the place for you!

Some students say dormitory security is 'broken'

On mailing lists, radio, and Facebook, concerned undergraduates articulate frustrations

Dorm security, from Page 1

to Random Hall and East Campus discussion forums and other relevant lists, Random Hall resident David Kaufman '16 wrote, "Not all students are so accepting of surprise parental visits. And I'm sure most of us think that parents of non-Randomites don't have any business walking into the building unaccompanied."

"Not all students are comfortable having their parents enter their living space," added Samuel Dukhovni '17 in the same email thread,

the various branches of which had 100 or more posts in total. "This could present serious risks to student security in the case of abusive parents."

The discussion about dorm security during Parents Weekend expanded to related issues, such as having security cameras posted around the entrances of residence halls as well as difficulties faced by residents trying to enter their dorms without their student ID.

Students also brought up concerns about hired security guards replacing the student desk work-

ers that some preferred in smaller dorm communities.

Many of the issues discussed centered around East Campus and Random Hall, but the conversation also included problems faced by MacGregor and Next residents.

A Facebook group called "MIT Dorm Security Is Broken" was created in September and has over 150 members. According to the group's description, it is meant to help MIT students share their experiences with dorm security, as well as discuss potential policies to address aspects of dorm security many stu-

dents dislike.

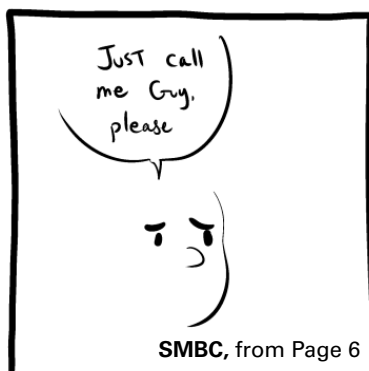
The creator of the Facebook group, Morris Alper '16, said in an email to *The Tech* that he created the group because he felt that students from all dorms needed a forum to discuss improving dorm security. He added that the ongoing problems with dorm security are nothing new and that some students have not been able to access the MacGregor convenience store or have had to personally escort guests even if they were already on a guest list.

"I think it's important for us to do this because as of yet the MIT

administration has not been receptive to our complaints, and I want to show them that we are more than a few isolated individuals and that we have real constructive advice to give," Alper said in an email to *The Tech*.

Dorm security was also the subject of a WMBR segment Monday evening.

A separate mailing list, *mit-dormsec@mit.edu*, was also created so that students could share their ideas about dorm security without adding to traffic on residence hall email lists.



Solution to Out Like a Light
from page 6

ATTIC	AFAR	ASTI
LAURA	BABE	PLUM
ACTOR	AILS	PURE
SOUNDASLEEP	MBA	
ERE	LISBON	
DECADE	DELETE	
IRAS	NERO	SORER
VATS	AMEND	PITA
ASCOT	ISSO	GNAT
HOISTS	GOOGLE	
SLINKY	HMO	
WON	INDREAMLAND	
ECGS	TIER	PATIO
DAZE	ARAB	AMONG
ELSE	XERS	HAZES

Solution to Saturday Stumper
from page 5

BAUDELAIRE	WISP	
ANNEMURRAY	AMOR	
RIPEOLDAGE	RARE	
QTIP	LES	CADGES
SANFRAN	MUSSELS	
ROB	BOPS	FOP
FAMILY	PETS	PISA
URIEL	OLE	SALES
LEAD	NAIL	BITERS
LAM	MICE	OAR
SCITECH	FEMORAL	
COHERE	TRI	NANA
ODES	JASON	BIGGS
PEAL	ORANGE	ZEST
ESTA	BIRDS	NESTS

Solution to Sudoku
from page 6

5	2	9	8	6	3	1	7	4
8	3	1	7	2	4	9	6	5
4	7	6	9	5	1	2	8	3
2	1	5	4	8	9	6	3	7
7	4	3	5	1	6	8	2	9
9	6	8	2	3	7	5	4	1
3	8	2	1	4	5	7	9	6
6	5	7	3	9	2	4	1	8
1	9	4	6	7	8	3	5	2

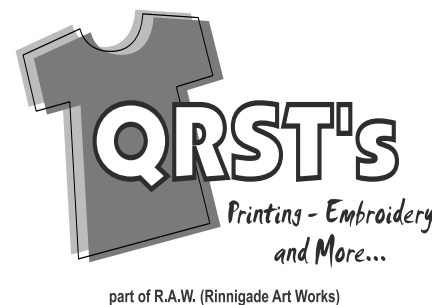
Solution to Techdoku
from page 6

4	3	5	6	2	1
1	6	2	3	5	4
6	5	1	2	4	3
5	4	6	1	3	2
3	2	4	5	1	6
2	1	3	4	6	5

CUSTOM PRINTED & EMBROIDERED T-SHIRTS

SWEATSHIRTS - POLOS - HATS & MORE!

ph - 617-625-3335
email - info@qrsts.com
www.qrst.com
Somerville, MA



the Hertz FOUNDATION

freedom to innovate

The Fannie and John Hertz Foundation is pleased to recognize the **2014 Hertz Graduate Fellowship Awards** of up to \$250,000 in the applied physical, biological and engineering sciences.

The Hertz Foundation would like to extend congratulations to **Massachusetts Institute of Technology** for attracting these Hertz Fellows to the MIT graduate programs.

CONGRATULATIONS

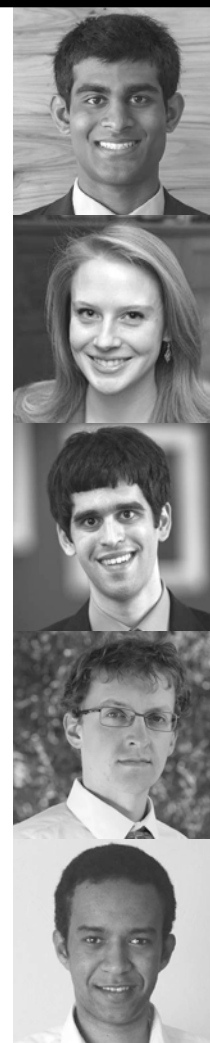
Ashvin Bashyam
Medical Engineering & Medical Physics

Katherine Lawrence
Physics

Samuel Rodriques
Applied Physics & Astronomy

Andrew Rzeznik
Applied Mathematics & Fluid Mechanics

Asmamaw Wassie
Biological Engineering



Learn more about the Hertz Foundation and Graduate Fellowships www.HertzFoundation.org

Is YOUR team destined to win the playoffs/superbowl/world series/ultimate showdown of ultimate destiny this year?

Write for sports and tell us why!
join@tech.mit.edu



LEGATUM CENTER
FOR DEVELOPMENT &
ENTREPRENEURSHIP
MASSACHUSETTS INSTITUTE OF TECHNOLOGY



EXPLORING GLOBAL PROSPERITY

NATHAN GAMESTER,
PROGRAMME DIRECTOR,
LEGATUM PROSPERITY INDEX

WEDNESDAY, NOVEMBER 19TH
5:30PM E51-395

IS NATIONAL SUCCESS BASED ON MORE THAN JUST WEALTH?
THIS EVENT WILL EXPLORE THE DATA AND FINDINGS FROM THE
2014 GLOBAL PROSPERITY INDEX.

FREE AND OPEN TO THE PUBLIC

EVENTS

NOV. 18 – NOV. 24

TUESDAY

(5:30 p.m. – 6:00 p.m.) Modern War Gardens: Paradise Lost, with photographer Lalage Snow, sponsored by the MIT Global France Seminar — 2-105

(7 p.m. – 8 p.m.) Innovations in Wind Energy Lecture Series: Cape Wind, presented by Cape Wind Communications Director Mark Rodgers, with pizza served — 3-333

WEDNESDAY

(3:00 p.m. – 4:30 p.m.) Life after the Postdoc: Research positions beyond the tenure track, sponsored by the Office of the Vice President for Research — 46-3002

(4 p.m. – 6 p.m.) 2014 Engineering Boutique Night for all levels of engineering students, sponsored by GECD, registration required — Sheraton Commander, 16 Garden Street

THURSDAY

(8 a.m. – 1 p.m.) Choose to Reuse (dropoff starting 8 a.m., pickup starting 11 a.m.) — 32 first floor

(5 p.m. – 6 p.m.) MISTI-Russia Info Session — E40-496

FRIDAY

(8 p.m. – 10 p.m.) MIT Sounding: Roomful of Teeth, tickets free with MIT ID on Eventbrite — W16 (Kresge auditorium)

(8:00 p.m. – 10:30 p.m.) MIT American Indian Science and Engineering Society shows Windtalkers, refreshments provided — 4-237

SATURDAY

(7:00 p.m. – 8:30 p.m.) LSC shows *10 Things I Hate About You*, tickets \$4 in Lobby 16 — 26-100

(7 p.m. – 9 p.m.) MIT Brazilian Student Association and UA show Central Station, with traditional Brazilian food — 3-270

SUNDAY

(4 p.m. – 6 p.m.) Fidelio Trio — 14W-111 (Killian Hall)

MONDAY

(7 p.m. – 9 p.m.) Regenarratives, with speaker Gabriel Kahan — E15-070 (Bartos Theatre)

Send your campus events to events@tech.mit.edu.

got mocha?

RING THE ALARM 2014 DANCE COMPETITION

November 21 | 7:30PM
Lobdell Dining Hall
Doors Open at 7PM

\$7 Tickets
Lobby 10: 11/10 - 11/14
Stud: 11/17 - 11/21



sponsored by
large event fund

mocaptains@mit.edu

MIT eclipses tourney at Brown

Ballroom Dance team takes competition by storm

By Amy Fan

TEAM REPRESENTATIVE

Over Veterans' Day weekend, the MIT Ballroom Dance Team (MITBDT) again sent its dancers to the top of the finals at Brown University's 20th Annual Ballroom Competition.

In addition to winning the Christina Cryan Newcomer Team Match for the eleventh year in the row, MITBDT's rookies dominated the finals in their second competition this season, taking the majority of the finalist spots.

Throughout the competition, Matthew L. Cavuto '17 with Rachael Schwartz (Wellesley '18) and Alexander F. Padron '18 with Amber T. Guo '18 vied for first place at the Newcomer level across all styles. Cavuto and Schwartz placed first in all Rhythm and Latin events, while Padron and Guo placed first across all Smooth and Standard events. Also of note, Ethan A. Bates G and Laura Jarin-Lipschitz '16 placed in finals across all Newcomer

events.

Although the day began with Rhythm events, the bulk of the veteran dancers did not compete until the Smooth and Standard events. At the Bronze level, Daniel R. Chen '17 and Casey R. Crownhart '17 took first place across all events for both Smooth and Standard styles. Jacky Chen G and Francesca Y. Majluf '17 finished close behind at second place. Vitaly Abdrashitov G and Amy S. Ishiguro '16, and Corey A. Cleveland '17 and Clio Flikkema (Wellesley '17) placed across all Silver Smooth and Standard events, with Abdrashitov and Ishiguro taking first place in International Waltz/Quickstep and Cleveland and Flikkema winning International Tango/Foxtrot.

Although only a couple couples competed at the higher levels in Standard and Smooth, all dancers placed in the finals. Dilip J. Thekkoodan SM '14 and Amy C. Fan '15 took home first place in all Smooth events for MIT-

BDT; Ross E. Finman G with partner Ji Shiyan, and Thekkoodan and Fan also took two of the five finalist spots in all Gold Standard events.

The highlight of the Standard and Smooth events came as Benjamin R. Moss PhD '14 and Esther Rheinbay, beloved amateur coaches, took to the floor for the Open Standard events amongst the cheers of the entire team. Moss and Rheinbay won first place after performing a stunning Open five-dance.

Finally, the long day ended with MIT taking Latin events by storm. In addition to rookies taking six of the seven finalist places, MITBDT members came out on top for all Silver and Gold events. Aaron Beal and Amy Yuan (Wellesley '16) placed first in Silver, with MITBDT Captain Jorge Valdez G and partner Laura J. Perovich G, and Cleveland and Flikkema rounding out the top three. Finishing up the night, Brian R. Solomon G and Jessica Bernier SM '11 placed first in Gold Latin.

Team excited for next season

Mountain bike team hopes to continue successful run

Biking, from Page 16

momentum over the summer during a weekend training camp. Over 25 MIT students, affiliates, and friends headed up to the beautiful trails of Vermont to train with their coach, also known as "Coach Psi." New members were encouraged to attend this training weekend, in addition to a training clinic held on campus in September. From beginners to seasoned veterans, all learned new skills and techniques that served them well in the upcoming season.

One of the pinnacles of the season was another first in a long time

for the team: hosting MIT's very own mountain bike race weekend. Much is required to host a race, including building the race courses and arranging logistics to ensure that over 300 collegiate racers from all over New England race safely and fairly, all while having fun. Thanks to the tremendous efforts of veteran members Michael B. Eck '15 and Luke C. Plummer '14, the team was able to pull off a very successful weekend.

"My favorite weekend was definitely the race weekend we hosted, where the team came together to put on our first mountain bike race in at least six years," said Eck. "It was really

fun to hear rave reviews of the courses, but it was even better to have the whole team of over 25 people crammed into a tiny house for two nights of great hanging out."

Although the mountain biking season has ended, team members are already looking forward to next season. They hope to continue their streak of success, not only in winning trophies but also in spreading their love of mountain biking. As team member Jennifer L. Wilson G put it, "Mountain biking seems to be about big kids behaving like little kids. You're out in the woods, getting dirty and being completely carefree."

MIT wins NEFC

MIT will face Husson in first round of the NCAA playoffs

Football, from Page 16

10 again. The result was the same as Justin R. Wallace '15 started the drive with a 13-yard. Williams completed a key 20-yard pass on a 3rd and 17 to Seve A. Esparrago '16 to keep the drive alive and then capped it off with a 10-yard toss to Varady to make it 17-0.

MIT's defense then struck on the third play of the next Coast Guard drive when Cameron L. Wagar '15 intercepted a pass from Derek Victory and returned it 36 yards for a score to put the Engineers up 24-0 with 3:15 left in the half.

Coast Guard came to life in the second half, with Victory completing 14 of 23 attempts in the third quarter for 129 yards and one score. The Bears' defense also stepped up, holding MIT to just 31 yards in the third. Midway through the quarter Victory found Bryan Popp from three yards out to cap a 10-play, 53-yard drive to put the first points of the evening on the board for the Bears.

Victory hit Collis Brown on a key 39-yard pass play late in the third that keyed another Coast Guard scoring drive. This one took just 1:25, and nine seconds into the fourth quarter Victory hit Gordy Holloway from 12-yards out to make it 24-13.

MIT drove deep into Coast Guard territory midway through the quarter to try and seal the win, but Wil-

liams was picked off by Mark Behne to stymie the attempt. MIT drove into scoring position again, but this time was thwarted when Cheyne's 42-yard field goal attempt was blocked with four minutes left.

Coast Guard picked up a first down on its own 44 on the ensuing drive, but three plays later Anthony M. Emblerley '17 intercepted Victory at midfield and the Engineers were able to run out the clock and take home the victory.

Wallace finished with 135 yards to lead the MIT ground game, while Williams completed 19 of 35 attempts for 241 yards and the two scores. Esparrago led the receivers with 144 yards on nine catches for MIT, which outgained Coast Guard by a 451-245 margin. Victory completed 21 of 44 for 173 yards and two scores, with Popp grabbing five passes and Brown four more for 66 yards.

Victor Rizzardi led all players with 12 tackles for Coast Guard. Wagar led MIT with eight stops and the interception while breaking up another pass attempt.

MIT, which has also earned its first-ever bid to the NCAA Division III Football Championship as NEFC champion, will learn where it falls in the playoff bracket tomorrow when the team gathers in Rockwell Cage on the MIT campus to watch the NCAA selection show at 6 p.m.

Distinguish Yourself

as a Burchard Scholar

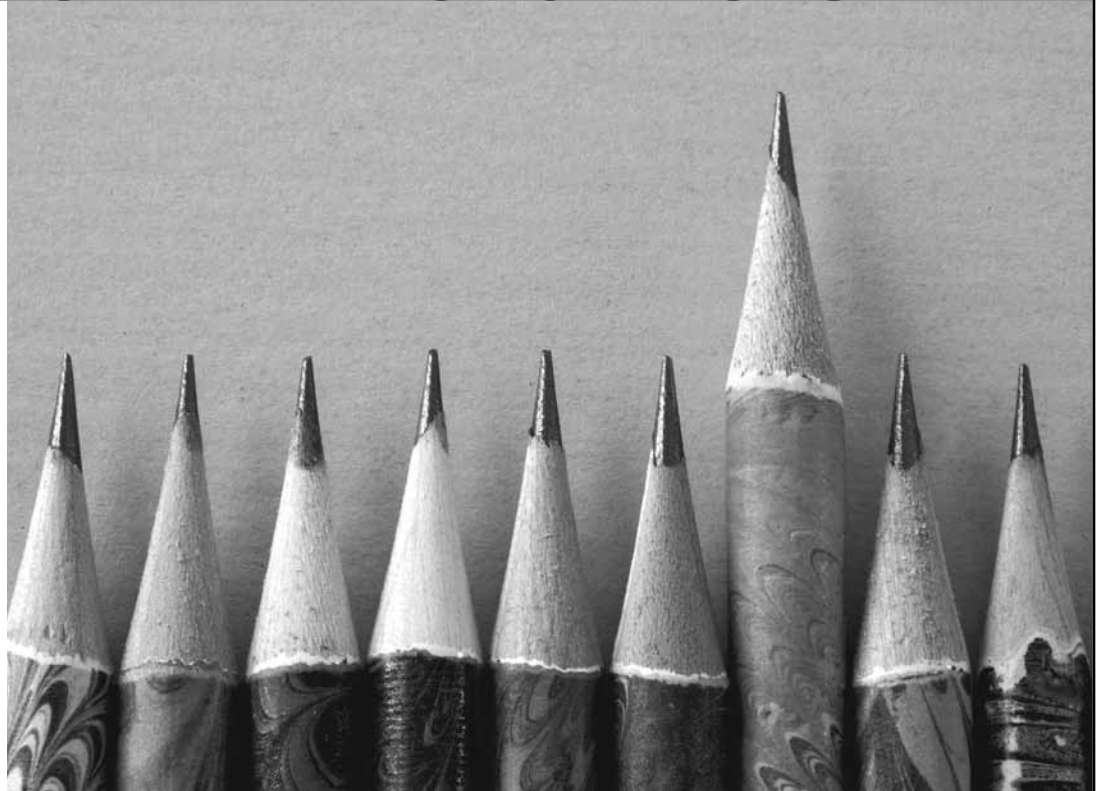
Expand your intellectual and social horizons.

Meet with other Burchards and MIT faculty each month for a delicious dinner and seminar on topics of the day. Sophomores and Juniors who have shown excellence in some aspect of the humanities, arts, or social sciences are encouraged to apply. Burchard Scholars can be majors in any department; no preference is given to HASS majors.

Apply at:

shass.mit.edu/burchard

Sophomores + Juniors—Apply by November 20, 2014



great ideas change the world

SCHOOL OF HUMANITIES, ARTS, & SOCIAL SCIENCES

